

## Yuji ONO



This is an impressive work of art from Yuji Ono's *Tableaux* series in which he used Western paintings from the 16th century to the time of Impressionism. In this artwork, the artist focused on the painting of a saint, which a Florence painter Carlo Dolci made for the House of Medici, and the painting's frame and crucifix in the image are awe-inspiring. In the other work, he used the painting of St. Francis of Assisi created by Bartolomé Esteban Murillo, a Spanish Baroque painter, while beautifully capturing its delicate texture on his gelatin silver print.

[Yuji ONO interview movie](#)

### *Ritratto della Grand sa Vittoria della Rovere, DolciCarlo*

1999

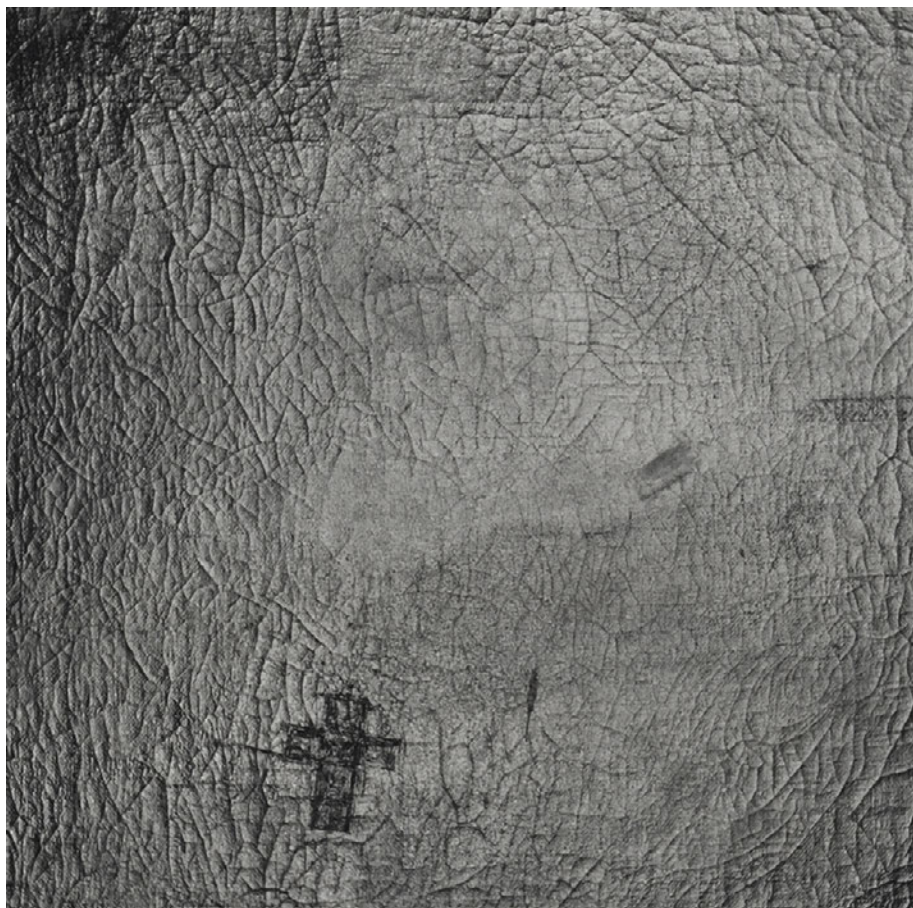
gelatin silver print

image: 112.5 × 89.5cm, 66.6 × 52cm

frame: 128.2 × 105.2cm, 83 × 70cm

Ed.12 each

## Yuji ONO



Yuji ONO



*St Francis of Assisi Reciving the Stigmata, Murillo*

1997

gelatin silver print

image: 112.5 × 89.5cm, 66.6 × 52cm

frame: 128.2 × 105.2cm, 83 × 70cm

Ed.12 each